

How to make a Peter Pan Collar for a t shirt



Do you have a t shirt that needs a lift? Susan Penny shows you how

I have always loved the idea of remodeling an item of clothing into another more useful item of clothing. So, last week when I found this rather lovely t shirt in Primark, costing just £3, I snapped it up rather than brave the queue for the changing rooms. This I find is always a mistake! The colour was great, as was the cute bluebird pattern, but whatever brooch or scarf I tried at the neckline, I felt it needed a bit of tweaking!

In my 'things I have loved, but can't bare to throw away drawer', I have a baggy camisole top that I wore in the 80's. I still look at it and go hot and cold when I imagine how it must of looked on me. The fabric is fabby: a fine white cotton with just a little stiffness, that with a little bit of work would make a great collar for my t shirt. I have decided not to show you the camisole in it's entirety, for fear you might cast judgement on my fashion sense.

So, with the bits I'm never going to show you cut from the top, the fabric pressed and the t shirt washed and checked for colourfastness, I will show you how to make a Peter Pan collar to fit your t shirt.

To make a collar you will need:

An A4 sheet of parchment or greaseproof paper

Pencil

Black pen

Pins, tacking cotton and needle

Sewing machine loaded with white thread

Fabric for your collar

Iron-on Vilene

Ribbon and a button

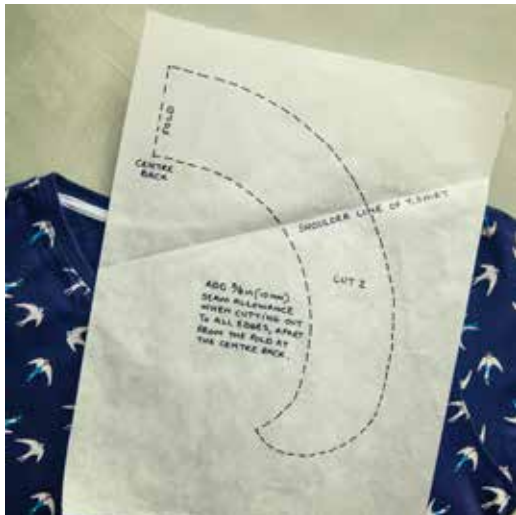
Follow the walkthrough on the next page, or at www.susanpenny.co.uk



1 Find the centre front and back of your t shirt and mark with pins. Place the parchment paper under the t shirt and pin it to the paper along the shoulder seam. Draw a dotted line, marking the collar back onto the paper.



2 With the pins at the shoulder still in place, fold the paper over on the shoulder line. Starting at the top of the shoulder, continue drawing a line, following the collar edge to the centre front. Remove the pattern from the t shirt.



3 Trace the lines onto one side of the paper. You have now drawn the inner edge of the collar. To complete the collar pattern, draw a line at 90 degrees, 5.5cm long from the centre back point. Continue this line, rounding it off at the end of the collar.



4 With the centre back of the collar pattern on the fold of the fabric, cut 2 collars, adding a $\frac{3}{8}$ in (10mm) seam allowance. Iron Vilene onto one collar and then, pin, tack and then machine stitch around the outer edge.



5 Clip the seam allowance around the entire length of the collar. Turn through, and press. On the inner edge of the collar, fold in both edges and press. Pin the collar to the t shirt matching the centre back.



6 Machine stitch the collar to the t shirt, a short distance in from the edge of the collar. Work slowly so not to pucker the fabric. Add a ribbon bow and button to the centre front of the shirt.